



## ACORN ANTS READY TO GO?

### WAITING IS THE FIRST THING.

*That's right, sit back and let your queen wait in the dark for the next hour or 2, nice and quiet so she relaxes after her long journey. It will de-stress her and make her much less grouchy when you meet her.*

### OPEN AND CHECK HER

*Once calm, carefully open and check her to make sure she made the journey ok. When you see she is happy, put her back away at the right temp then check her weekly for workers. (some queens need feeding while founding, you can see if your species does on the next page).*

*If she has workers now, feed her and resume weekly checks until 50+ workers where she will be ready for her first nest (ideally an acorn in an outworld is fine).*

*Try and keep checks to a minimum (we know it is hard, we just want to watch ours all day too!) but she will thank you for it with extra brood and a lower chance of eating her eggs.*



### FIRST BITE

*Once you have workers add a tiny drop of our very own sugar snap (even species not crazy for sugar could use the extra energy when they first found). Remove uneaten snap the following week and replace with protein, visa versa.*

### SNUGLY

*The temperature of the nest should sit between **The temperatures given on the fact sheet overleaf** - ideally with a gradient. Try to monitor it though as exceeding 30 degrees could make your queen become infertile and should be avoided if at all possible.*

### HUMIDITY IS KEY

*Temperature and humidity, when perfect can increase brood growth and help your queen produce bigger, faster growing colonies. Keep your nest humidity within the target range and remember to water the nest weekly.*

### TEST TUBE CHANGES

*Try to avoid changes unless you see a discoloured water, black mold or they run out of water. If vital then we have provided a spare tube and cotton wool for your tube change.*

*Attach the 2 tubes together using a plaster (or something breathable) leaving a hairline gap between tubes as you affix the plaster. Leaving the old tube exposed to light make the new tube dark and warm.*

*Please do not force a move, your queen could take weeks. She will move over when she is ready*





# TEMNOTHORAX SPECIES

## ACORN ANTS

### Tiny peaceful ants- Beginner

Acorn ants are probably the cutest species of ant you will come across. These tiny colonies of 200-300 workers quite literally fit into an acorn sitting peacefully in the ground little of forest floors.

*Being so small their colonies go unnoticed to anyone walker overhead. Unifasciatus are found across Europe in very different temperatures. They are durable and resilient to heat and cold making them great for beginners.*

With this in mind we feel the day and night routine is quite essential for acorn ants, they are not protected by stable climates deep in the earth and their behaviour and cycles can be dependent on the warm/cool cycles.

Acorn ants are extremely peaceful, they avoid conflict with other ants and are not usually pestered by most other species too. For that reason they can be compatible with other species in bigger setups and live in the same enclosure on the surface with their neighbours of another species.

With the exception of sugars which they collect from aphids and plants they do not really compete with other ants for food. Silently foraging on the forest floor they will prey on small protein sources like spring tails and dipterans.

Although they are considered monogyne they have been known to tolerate another queen, especially where their nest is divided over 2 acorns for example.

Other species of Acorn ants however such as *Temnothorax Angustulus* are far more arboreal in foraging and are polygyne making larger colonies overall.

*This species is best suited to a small acorn (ideally hollowed) and placed in an outworld to mimic their natural environment. Ideally a room which heats and cools in an area with indirect light (like the shadow light under an oak tree is)*

## KEY STATS

### Colony Size

200 to 300 workers (Above ground)

Unknown (Under logs / rocks)

### Queen

Age - 5 to 15 years (workers up to 6 months)

Monogyne - but can be tolerant of others within reason

Fully Claustral -no food until first workers

### Temperature & Humidity

Nest - Ambient | Outworld -Ambient

Nest 50%-60% | Outworld 30% to 50%

### Winter Rest

Yes - October to March at 5-8 degrees

### Polymorphic (Different size castes)

No

### Sting | Bite | Spray

No

### Diet

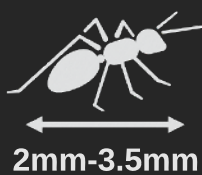
Insects, Sugars, Carbs

### Nest Type

Acrylic, Sand, Earth, Ytong, Plaster, Glass



3mm to 4.5mm



2mm-3.5mm



200 to 300+



Ant Antics  
Priory Street  
Carmarthen  
SA31 1LS  
antantics.co.uk  
info@antantics.co.uk