



## CAREBARA DIVERSA READY TO GO?

### WAITING IS THE FIRST THING.

*That's right, sit back and let your queen wait in the dark for the next hour or two, nice and quiet so she relaxes after her long journey. It will de-stress her and make her much less grouchy when you meet her.*

### OPEN AND CHECK HER

*Once calm, carefully open and check her to make sure she made the journey ok. When you see she is happy, put her back away at the right temperature then check her bi-weekly until you see she has workers.*

*If she has workers now, feed her and resume weekly checks until 80+ workers where she will be ready for her first nest.*

*Try and keep checks to a minimum (we know it is hard, we just want to watch ours all day too!) but she will thank you for it with extra brood and a lower chance of eating her eggs.*



### FIRST BITES

*Once you have workers you can then begin providing them with food. Always remove uneaten food after 48 hours.*

*Water is essential all of the time but weekly feedings are a good bet at first (for food). Sugars provide carbohydrates and our snaps is the perfect treat for that. You can also make your own, use fruits like apple, banana, grape e.t.c and of course honey is fantastic too.*

*For proteins start small, chopped insects, protein shakes e.t.c*

### SNUGLY

*The temperature of the nest should sit between **The temperatures given on the fact sheet overleaf** - ideally with a gradient. Try to monitor it though as exceeding 30 degrees could have negative affects on your queen.*

### HUMIDITY IS KEY

*Temperature and humidity, when perfect can increase brood growth and help your queen produce bigger, faster growing colonies. Keep your nest humidity within the target range and remember to water the nest weekly.*

### BE NEST READY

*This species is best suited with their test tube placed directly into an outworld. They will grow FAST, and we are not exaggerating here. Always have your next nest ready to go the second you use your last one.*





# CAREBARA DIVERSA

## THE MARAUDER ANT

### The Asian army ant - Expert Species

Carebara Diversa is a force which is not to be taken lightly. Their growth will resemble a geminata fire ant colony (but without the stingers) and their behaviour is much like the army ants of the Americas.

***Known as the Marauder ant they earn this title with pride. The colony can send swarm trails for food which will be 1/3 or more of the colony. With 10k plus individuals trailing out each morning on a quest they will obliterate everything in their path.***

From seeds to insects nothing is safe from Diversa. Encountering other colonies will see even the tiny workers show bravery beyond recognition as the front line reinforces in a bid to overpower the danger with numbers.

Diversa are well known for some of the most extreme polymorphism in the ant world. With tiny minors around 2mm long they will hitchhike on larger workers and completely cover the queen. This species has supermajors too. Their entire existence is to subdue prey and crush the seeds they find. Supermajors can be 500 times the weight of minors and this polymorphism really is an attractive part of keeping

This species will not fail to amaze you, they will grow super fast with up to 2,000 or 3,000 workers being present in the first 6 to 10 months.

Diversa will turn soil in natural setups so bare this in mind when you are designing yours.

Be nest ready and escape proof

The key to this species is always having the next upgrade on hand. Whenever you move them in or add a nest, buy the next one the same day so it is ready. Using escape prevention is critical too, but be wary of oil for this species as their "eat everything" diet will see them eating an oil barrier for the calories within it.

Minding this advice will reward you with the most fun species you are sure to keep.

## KEY STATS

### Queen

Age - Up to 11 years (estimated)

Polygyne - Multiple queens per nest

Fully Claustral - No food until first workers

### Temperature & Humidity

Nest 27 to 30 Degrees | Outworld 25 to 30 Degrees

Nest 50% to 60% | Outworld 30% to 80%

### Diapause / Hibernation

No

### Polymorphic (Extreme)

Workers- 2mm to 4mm

Medias & Majors - 5mm to 11mm

Super Majors - 11mm to 18mm

### Bite

They will bite in numbers

### Diet

Sugars, & Proteins in huge amounts

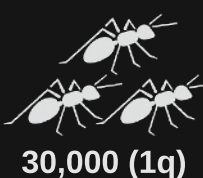
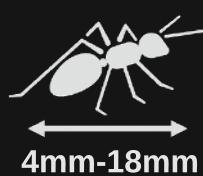
Always ensure a constant fresh water supply is provided

### Nest Type

Natural, Acrylic, Ytong, Earth, Glass

### Development

Egg to Adult Worker - 7 to 10 weeks



Ant Antics  
Priory Street  
Carmarthen  
SA31 1LS  
antantics.co.uk  
info@antantics.co.uk