



MYRMICA RUBRA READY TO GO?

WAITING IS THE FIRST THING.

That's right, sit back and let your queen wait in the dark for the next hour or two, nice and quiet so she relaxes after her long journey. It will de-stress her and make her much less grouchy when you meet her.

OPEN AND CHECK HER

Once calm, carefully open and check her to make sure she made the journey ok. When you see she is happy, Provide her with some food (Fire Ant Queens are semi-claustral and require feeding during founding [except Fugax which requires no food until first workers]).

If she has workers now, feed her extra and resume twice weekly checks until 30+ workers where she will be ready for her first nest.

Try and keep checks to a minimum (we know it is hard, we just want to watch ours all day too!) but she will thank you for it with extra brood and a lower chance of eating her eggs.



FIRST BITES

Once you have workers you can then begin providing them with food. Always remove uneaten food after 48 hours.

Water is essential all of the time but weekly feedings are a good bet at first (for food). Sugars provide carbohydrates and our snaps is the perfect treat for that. You can also make your own, use fruits like apple, banana, grape e.t.c and of course honey is fantastic too.

For proteins start small, chopped insects, protein shakes e.t.c

SNUGLY

*The temperature of the nest should sit between **The temperatures given on the fact sheet overleaf** - ideally with a gradient. Try to monitor it though as exceeding 30 degrees could make your queen become infertile and should be avoided if at all possible.*

HUMIDITY IS KEY

Temperature and humidity, when perfect can increase brood growth and help your queen produce bigger, faster growing colonies. Keep your nest humidity within the target range and remember to water the nest weekly.

TEST TUBE CHANGES

Try to avoid changes unless you see a discoloured water, black mold or they run out of water. If vital then we have provided a spare tube and cotton wool for your tube change.

Attach the 2 tubes together but remember to allow a small gap for air to get in. Allow your queen to move into the new tube on her own. Make the new tube dark and the old tube light, it helps her decide!

Please do not force a move, your queen could take weeks. She will move over when she is ready and in her own time.



MYRMICA RUBRA THE RED ANT

Common Red Ant - Intermediate Species

Myrmica Rubra are an invasive species of ant which lay claim to many continents. Typically loving moist and damp locales they dominate their environment with aggression and mass strength.

Being fast growing and in such high numbers Myrmica typically do not fully awake from hibernation until April of each year, they are quick to grow, move and gather the food they need in a shorter year than most species. Their method of communication with other nests helps them do this. Being polycalic they can be at peace working with other nests making one large "Super-Nest"

A Queen may only produce an average of 1,000 workers but being polygynous a nest can quickly create a huge army where up to 15 or more queens are present.

Using their overwhelming power, speed and venom Myrmica can quickly subdue prey several times their size and feed their ever hungry brood. As such they need lots of humidity and proteins!

This species stings, in comparison it is around the potency of a stinging nettle. However each ant can sting multiple times in quick succession so caution in handling is advised.

KEY STATS

Queen

Age - Up to 10 to 15 years (estimated)

Polygyne - Multiple queens per nest

Semi Claustral - Food required in founding

Temperature & Humidity

Nest 21 to 24 Degrees | Outworld 20 to 28 Degrees

Nest 60% to 75% | Outworld 30% to 60%

Diapause / Hibernation

Yes - October through March at 6 to 10 degrees

Polymorphic

No

Sting

Yes

Diet

Sugars, Protein (insects)

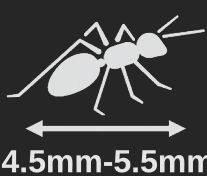
Always ensure a constant fresh water supply is provided

Nest Type

Natural, Wood, Ytong, Earth, Glass

Development

Egg to Adult Worker - 8 to 12 weeks



Ant Antics
 Priors Street
 Carmarthen
 SA31 1LS
 antantics.co.uk
 info@antantics.co.uk